

## ASPIRE

- **Ambition**  
We will enable our students, staff and community to be confident of success
- **Success**  
We will ensure that all achieve and attain their potential
- **Potential**  
We will unlock the potential to be independent learners
- **Independence**  
We will encourage all to be independent, responsible learners
- **Responsibility**  
We will ensure that all take responsibility for themselves, others, and the community, raising engagement at all levels
- **Engagement**  
We will encourage all to engage in all aspects of their learning - we aspire!

Dulwich College has been the lead sponsor for the Isle of Sheppey Academy since its inception in 2007. Dulwich College have focused on governance and securing the new build for the Academy. They worked closely with the other sponsors, the Diocese of Canterbury and Kent County Council, in preparing for the opening of the Academy in September 2009 and in beginning to implement the sponsors' vision for the Academy. The aim is to raise aspirations to ensure that all the Academy's students are able to fulfil their academic and personal potential.

As we look to the years ahead, Dulwich College is committed to encouraging innovative schemes which bring a closer working relationship between the staff and students of the Academy and the College in order for us to achieve our aims.



## INTRODUCTION

### WELCOME

High Standards and determination for success – An introduction by Steve Davies.

Here at The Isle of Sheppey Academy we have three clear and distinct aims for our Sixth Form:

- To continue to achieve high levels of Academic Success
- To enable our students to gain not only qualifications to pursue their dreams and goals, but also the aspiration, life skills and sense of responsibility to be the best they can be
- To enable our Sixth Formers to enjoy their education and be involved in the life of the whole Academy

Academic study and high levels of achievement are at the very centre of all we do at The Isle of Sheppey Academy Sixth Form Centre, but there is much more to being a successful Post-16 student than just succeeding in exams.

You will be actively encouraged to be involved in debates, social events, fund raising and much more. You will be actively involved in shaping your educational experience, and being role models for younger students. In short – our Sixth Formers set the culture of aspiration for the entire Academy. The more you put into life in the Sixth Form, the more you will get out of it.

Being a Sixth Former at The Academy offers more freedom and opportunity than you will previously have had as a pupil, but with that comes responsibility. We expect all our students to promote positive values, to use their time wisely and to be as focused on success as we are as a Sixth Form Leadership team.

We are building a real reputation for Academic success with enviable results in more and more subjects year on year; in addition, we are forging a Sixth Form where relationships and partnership between students and staff are excellent, and our extra curricular opportunities are extensive.

I am proud to say on behalf of the whole Academy Senior Staff that we see our Sixth Form as the goal for all students in the Academy, and aim to ensure that no matter what your Academic level, we can provide a curriculum provision and support that will enable you to thrive, succeed and achieve your goals.

I look forward to seeing you as part of the ongoing success of The Isle of Sheppey Academy Sixth Form.



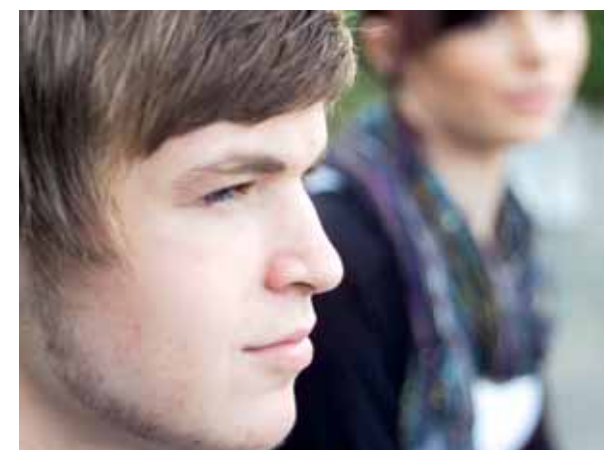
## OUR MISSION, OUR AMBITION AND OUR PATHWAYS

It is our aim to be a truly inclusive post-16 centre for the Isle of Sheppey. Our intention is to provide a meaningful and worthwhile curriculum that achieves the following three aims:

- To provide clear progression from the choices made in KS4 and provide a Level 3 curriculum that gives opportunity to those who have already achieved Level 2, and a dynamic and engaging Level 2 curriculum for those who have not met that threshold
- To enable every student to find a course that they will engage in, enjoy and achieve success in
- To give every student a clear pathway to success beyond the Isle of Sheppey Academy, whether that is engaging in further academic study at University, or obtaining employment after their post-16 studies

### Our Pathways - explored in more detail overleaf

- The Academic Pathway
- The "Mixed" – Academic and Vocational – Pathway
- The Occupational Pathway





## OUR PATHWAYS

PATHWAY	ENTRY REQUIREMENTS AT L3	ENTRY REQUIREMENTS AT L2
<b>Academic</b>	<p>5 A-C in different subjects, preferably with both English and Maths at grade C or above; individual courses have additional requirements (see individual pathway description)</p> <p>Attendance of 90%+ in Year 11</p> <p>A good attitude to learning and a desire to be successful</p>	<p>Attendance of 90%+ in Year 1</p> <p>A good attitude to learning and a desire to be successful</p>
<b>Mixed</b>	<p>5 A-C in different subjects, preferably with English and Maths at grade C or above; a relevant BTEC will count as 4 x GCSE grade C; some individual courses have additional requirements (see individual pathway description)</p> <p>Attendance of 90%+ in Year 11</p> <p>A good attitude to learning and a desire to be successful</p>	<p>Attendance of 90%+ in Year 11</p> <p>A good attitude to learning and a desire to be successful</p>
<b>Occupational</b>	<p>5 A-C ; a relevant BTEC will count as 4 x GCSE grade C; some individual courses have additional requirements (see individual pathway description)</p> <p>Attendance of 90%+ in Year 11</p> <p>A good attitude to learning and a desire to be successful</p>	<p>Attendance of 90%+ in Year 11</p> <p>A good attitude to learning and a desire to be successful</p>

## THE ACADEMIC PATHWAY

### What is the Academic pathway?

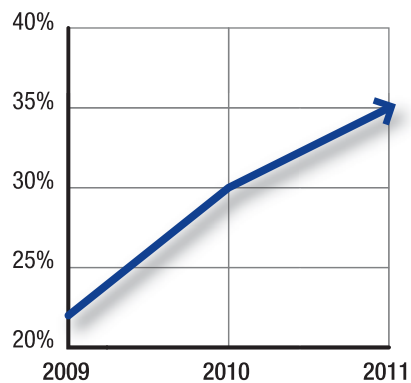
This Pathway is focused on high level study and traditional academic A-Levels. At The Isle of Sheppey Academy, we offer a broad range of A-Levels from science to psychology, English to law. Students opting for this pathway must have 5 or more A-C grades in different subjects (BTECs will count as one subject); it will be preferred that students engaging in a full A-Level programme will also have English and Maths at grade C and above (however, this is not essential for all A-Level subjects).

### Who will follow the Academic pathway?

You should choose this pathway if you are eager to go to University and are expecting to obtain impressive results in your GCSE exams.

### Why follow the Academic pathway – what will it lead to?

The Academic pathway is the best route if you want to go to University – there are many reasons why you should consider university – it is a fantastic experience, it gives you a chance to learn study and research skills that will enrich your life and studies suggest university graduates on average earn £100,000 more than people without degrees over their careers.



100% 2 + Levels  
 73% 5 A\* - C GCSE  
 35% 5 A\* - C GCSE inc. English & Maths

### Can I follow the Academic pathway at Level 2?

Yes – if you have not succeeded in obtaining 5 A-C we are running a set of GCSE courses for students to attain this threshold and achieve the English Baccalaureate (English, Maths, Science, History, French). This would be the ideal preparation for the Level 3 Academic pathway if you have not achieved the Level 2 threshold.



### What subjects can I take and what are the entry requirements?

Entry requirements are listed in the appendix for individual courses. The table below details our courses:

COURSE	DESCRIPTION	MAXIMUM NUMBERS	FOR MORE INFORMATION SPEAK TO...
<b>Philosophy</b>	The critical examination of our most fundamental ideas about ourselves and the world. As individuals and as a culture, we have beliefs about these questions even if we do not always talk about them. Our beliefs influence the way we live, both personally and socially. Philosophy tries to make these beliefs obvious and open to examination; it encourages us to ask questions.	20	Mrs Meaning
<b>Citizenship</b>	An ideal choice for students who want to broaden their understanding of the modern world. Through the study of law, politics, economics and international relations you will develop a critical understanding of twenty-first century society and of your role within it. At AS you will study a variety of controversial topics, such as what it means to be British and whether recent changes to the benefits systems will create a fairer society. You will also look at who holds power in the UK and how individuals can work together to bring about change.	20	Miss Standing
<b>Psychology</b>	Psychology seeks to explain why people act, perceive, think and feel as they do. Psychologists study thought and behaviour at many levels: from the detailed structure and function of the brain through to social and cultural processes. We apply scientific methods to human behaviour and look at how it can be applied in areas such as education, health, forensics and sport.	20	Miss Palmer
<b>History</b>	Historians are trained to look for bias and prejudice in all the evidence they study. They know that human beings often have strong views on many subjects, which may affect the statements they made. History helps you to make decisions about other people and to decide if you trust what they say.	20	Mr Bradley

## THE ACADEMIC PATHWAY

COURSE	DESCRIPTION	MAXIMUM NUMBERS	FOR MORE INFORMATION SPEAK TO...
<b>Maths</b>	A Level maths is an academically demanding course, and as such is well respected by employers and universities alike. The UK currently has a shortage of people with advanced mathematical skills; successful completion of this course could lead to a lucrative career in a wide range of industries.	20	Miss Denman
<b>Critical Thinking</b>	How about studying a subject which specialises in making you think? A subject which enables you to pick apart any argument and separate the truth from the lies; Critical Thinking offers a chance to develop the highest level skills needed for A-Level study in all subjects - to analyse, evaluate and reflect. This is a genuine "breadth" subject that complements study of arts, sciences, mathematics and language	20	Mr Davies
<b>English</b>	The chance to be creative; the chance to do something you love; a way to develop skills of analysis that will be useful in careers as diverse as law to management; the chance to read and learn from the things that matter to each and every one of us. Study should enrich us intellectually, but also inspire us to be the best we can be	20	Mr Prior
<b>Sociology</b>	The study of society. It involves adopting a critical approach to human relationships and challenging accepted ideas about the institutions that govern our lives. You will study topics such as crime and deviance from a variety of theoretical perspectives, developing skills of analysis and evaluation whilst at the same time broadening your understanding of how and why society functions as it does	20	Mr Wiles
<b>Chemistry</b>	Chemistry helps you to understand the world around you. Everything you can touch or taste or smell is a chemical. Chemistry is not secret knowledge; it is the explanation for everyday things. For example, why laundry detergent works better in hot water or how baking soda works or why not all pain relievers work equally well on a headache. When studying Chemistry, you can make educated choices about the everyday products that you use	20	Dr Souter

## THE ACADEMIC PATHWAY

COURSE	DESCRIPTION	MAXIMUM NUMBERS	FOR MORE INFORMATION SPEAK TO...
<b>French</b>	Speaking more than one language is a skill which will increase your marketability. Employers tend to prefer candidates who speak one or more foreign languages. Even though English is widely spoken in much of the world, the fact is that the global economy depends on communication	20	Mrs Lane
<b>Law</b>	The study of the English legal system; you will gain an in-depth knowledge of how laws are made and enforced, visiting local courts and the Houses of Parliament in the first term. You will also look at the principles of criminal and civil liability, combining the study of Latin rules and principles with in-depth analysis of real-life cases	20	Miss Standing
<b>Geography</b>	What goes on outside your window, every minute of every day? Why natural hazards such as volcanoes, earthquakes, hurricanes and tornadoes create massive damage and affect the lives of thousands every year. The use of teamwork, analytical and communications skills, fieldwork in the great outdoors helps you to take command of the geography subject	20	Mr Peters
<b>Biology</b>	Biology is the scientific exploration of the vast and diverse world of living organisms; an exploration that has expanded enormously within the last four decades revealing a wealth of knowledge about ourselves and about the millions of other organisms with whom we share this planet Earth	20	Dr Souter





## THE MIXED PATHWAY

### What is the Mixed pathway?

This Pathway is focused on those students who want to study at a higher level, but are more interested in practical careers. Students in this pathway will follow a mix of Level 3 BTECs and traditional A-Levels, depending on their ability level and aspirations. At The Isle of Sheppey Academy, we offer a broad range of A-Levels (listed in the Academic Pathway section), and alongside these we run a range of academic Level 3 BTECs in practical subjects and the arts worth either 1, 2 or 3 A-Level equivalents. Students opting for this pathway will take one or more BTECS, possibly alongside one or two A-Levels and must have 5 or more A-C grades in different subjects (relevant BTEC diplomas will count as four grades).

### Who will follow the Mixed pathway?

You should choose this pathway if you want to keep your options open for careers and university, enjoy practical subjects and achieve well in coursework based subjects.

### Why follow the Mixed pathway – what will it lead to?

The Mixed pathway is a possible route to university, but also provides students with a grounding in a range of careers, especially in the arts and media industries.

### Can I follow the Mixed pathway at Level 2?

Yes – if you have not succeeded in obtaining 5 A-C we will run the same courses at Level 2 alongside the level 3 provision, so students will be able to take the subjects at a lower level if they have not already achieved the Level 2 threshold

### What subjects can I take and what are the entry requirements?

Entry requirements are listed in the appendix for individual courses. The table opposite details our courses:

## THE MIXED PATHWAY

COURSE	TAKE THIS COURSE IF...	A - LEVEL EQUIVALENCE	MAXIMUM NUMBERS	FOR MORE INFORMATION SPEAK TO...
<b>Drama</b>	You are a natural performer, interested in a career on the stage, in TV or the entertainment industry	2	20	Mrs Ruth
<b>Media</b>	You want to work in one of the many industries that centre around the media – television, film, newspapers and magazines	2	20	Miss Gray
<b>Business</b>	You are a budding entrepreneur and see yourself on Dragon's Den or the Apprentice	1	20	Miss Kerr
<b>Music</b>	You are a talented musician or singer – either making a hit record – or producing one	1	20	Miss Amos
<b>Dance</b>	You are a talented dancer – light on your feet and always the first to impress on the dance floor	1	20	Miss Williams
<b>Art</b>	You are aiming to be an artist, a graphic designer or work in advertising – you have a good talent for expressing yourself through a variety of artistic media	1, 2 or 3	20	Mrs Chapman
<b>ICT</b>	You are a computer wizard – always up to speed with the latest technology and want a career where your ICT talents can be put to good use	1	20	Miss Francis



## THE OCCUPATIONAL PATHWAY

### What is the Occupational Pathway?

This Pathway is focused on those students who want to study intensively for a specific range of careers. The courses run at Level 3 and Level 2 (for those who need to achieve that threshold), but are primarily focused at providing students with relevant skills and qualifications to move into specific careers. The level 3 courses are equivalent to 3 A-Levels and are full time courses studying that subject. There are specific benefits and unique opportunities in each course (detailed below). Students opting for this pathway must have 5 or more A-C grades in different subjects (relevant BTEC diplomas will count as four grades).

### Who will follow the Occupational pathway?

You should choose this pathway if you want to study a specific subject in greater detail and are ambitious for a career in that sector or industry.

### Why follow the Occupational pathway – what will it lead to?

The Occupational pathway is specifically designed to equip you with the skills for specific career opportunities.

### Can I follow the Occupational pathway at Level 2?

Yes – if you have not succeeded in obtaining 5 A-C we will run the same courses at Level 2 alongside the level 3 provision, so students will be able to take the subjects at a lower level if they have not already achieved the Level 2 threshold.

### What subjects can I take?

The table on the next page details our courses:



## THE OCCUPATIONAL PATHWAY

COURSE	TAKE THIS COURSE IF...	MAXIMUM NUMBERS	FOR MORE INFORMATION SPEAK TO...
<b>The Football Academy</b>	You are a talented sportsman – the course involves daily training with professional footballers and qualified coaching staff; all students will study Level 3 sport (2 A-Level equivalents) plus either Science (for those who want to pursue physiotherapy and sport science) or Leisure (for those interested in work in leisure centres and personal training)	18	Mr Fogg
<b>Vocational Science</b>	You are interested in a career in science, such as lab technician or research assistant. The course is broken in to 3 sections: Applied Science, Forensics and Environmental Science	20	Mr Grey
<b>Public Services</b>	You are eager to work in the uniformed public services – the army, fire service or police. The course will give you a broad and rounded education in the skills needed to succeed in these careers	20	Mr Ford-Wilson
<b>Travel and Tourism</b>	You want to work in the travel industries – either seeing the world or helping others to do the same. Students will spend time on work experience placements	20	Mr Beatty
<b>Child Care</b>	This course focuses on the careers around working with very young children and includes dedicated work placements for all students for one day per week	20	Mrs Read
<b>Horse Care</b>	This course will equip students with all the skills they need to work in the equine industries and working day to day with the care and management of horses. Much of the course involves practical experience working at a stables	15	Mrs Barritt
<b>Health and Social Care</b>	Students taking this course will want to move to careers in nursing, care or social work. Opportunities for work experience will be a strong feature of the course	20	Mrs Read
<b>Construction and Engineering</b>	This is a portfolio based suite of courses focused on a range of building, engineering and mechanical courses. It will enable students to gain practical hands-on experience to give them a thorough grounding in all manner of practical skills	20	Mr Inns
<b>Retail</b>	This new course will provide students with the skills and knowledge to succeed in the country's biggest employer – the retail sector. Work experience will be a big feature of the course	20	Mrs Mills
<b>Administration</b>	Administration features in all areas of work and this course will ensure you gain the skills and knowledge to be successful in all forms of office work. Work placements are a strong feature of the course.	20	Mrs Mills

## ENTRY REQUIREMENTS BY COURSE

### ACADEMIC PATHWAY

SUBJECT	ENTRY REQUIREMENTS
<b>Philosophy</b>	5 A-C in different subjects, to include both English and Maths at grade C or above
<b>Citizenship</b>	5 A-C in different subjects, to include Maths at grade C or above and grade B in English
<b>Psychology</b>	5 A-C in different subjects, to include English and Maths and Science at grade C or above
<b>History</b>	5 A-C in different subjects, to include with both English and Maths at grade C or above
<b>Maths</b>	5 A-C in different subjects, to include English at grade C and Maths at grade B or above
<b>Critical Thinking</b>	5 A-C in different subjects, to include both English and Maths at grade C or above
<b>English</b>	5 A-C in different subjects, to include Maths at a grade C and English at grade B or above
<b>Sociology</b>	5 A-C in different subjects, to include Maths at grade C and English at grade B or above
<b>Chemistry</b>	5 A-C in different subjects, to include English and Maths at grade C or above and Science at grade B or above
<b>French</b>	5 A-C in different subjects, to include both English and Maths at grade C or above and a grade C in a modern foreign language
<b>Law</b>	5 A-C in different subjects, to include Maths at grade C and grade B in English or above
<b>Geography</b>	5 A-C in different subjects, to include both English and Maths at grade C or above
<b>Biology</b>	5 A-C in different subjects, to include both English and Maths at grade C or above and Science at grade B or above





## ENTRY REQUIREMENTS BY COURSE

### MIXED PATHWAY

SUBJECT	ENTRY REQUIREMENTS
Drama	5 A-C in different subjects, preferably with both English and Maths at grade C or above. BTEC Level 2 Performing Arts at Merit or Distinction is essential
Media	5 A-C in different subjects, preferably with both English and Maths at grade C or above
Business	5 A-C in different subjects, to include Maths at grade C or above and English at grade B or above
Music	5 A-C in different subjects, preferably with both English and Maths at grade C or above. Music at grade B is desirable
Dance	5 A-C in different subjects, preferably with both English and Maths at grade C or above. BTEC Level 2 Dance at Merit or Distinction is essential. Audition: upon application, you will be asked to prepare a one minute solo dance, in the style of your choice
Art	5 A-C in different subjects, preferably with both English and Maths at grade C or above. A grade C or above in an Art subject is preferred
ICT	5 A-C in different subjects, preferably with both English and Maths at grade C or above. Students must have studied an ICT qualification at Level 2



## HOW TO APPLY AND CONTACT DETAILS

The preferred application is through [www.kentchoices4u.co.uk](http://www.kentchoices4u.co.uk). Your unlock code will be needed to access the application form. However, The Isle of Sheppey Academy Sixth Form will accept a hardcopy application.



## BUILDING A BETTER FUTURE

“Within the next two years a major £54 million building and development programme will provide students at The Isle of Sheppey Academy with brand new learning environments, each equipped with the most modern technology utilising the latest computer-based teaching and learning approaches. Specialist facilities for both sport and performing arts will be a key feature of the new building programme”

*Mr David Day – Principal The Isle of Sheppey Academy*

For further information about the Academy visit our website [www.theisleofsheppeyacademy.org.uk](http://www.theisleofsheppeyacademy.org.uk)

# Learn Believe Achieve

